



Food Web Project



Welcome!

Raimundo Fuenzalida Reyes
6th grade



FOOD CHAIN

A FOOD CHAIN
SHOWS HOW ANIMALS
GET THEIR FOOD AND
ENERGY



Food Web

FOOD WEB IS A DIAGRAMA THAT SHOWS THE RELATIONSHIP OF ANIMALS IN THE ECOSYSTEM. FOOD WEB IS A CONNECTION OF FOOD CHAINS

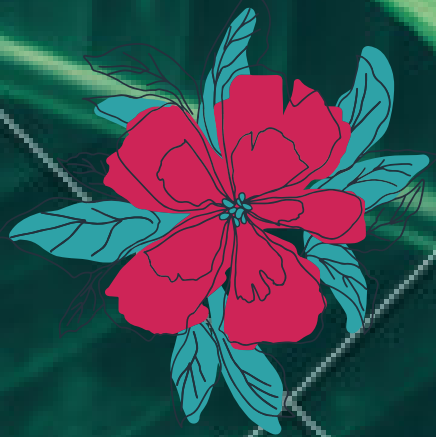


FOOD WEB CHARACTERISTICS

THEY ARE FORMED BY INTERLINKING OF
FOOD CHAINS.

THEY HELP IN THE DEVELOPMENT OF THE
ECOSYSTEM.

THEY ARE LARGE GENERALLY WITH 8-12
ANIMALS



Food Chain Characteristics

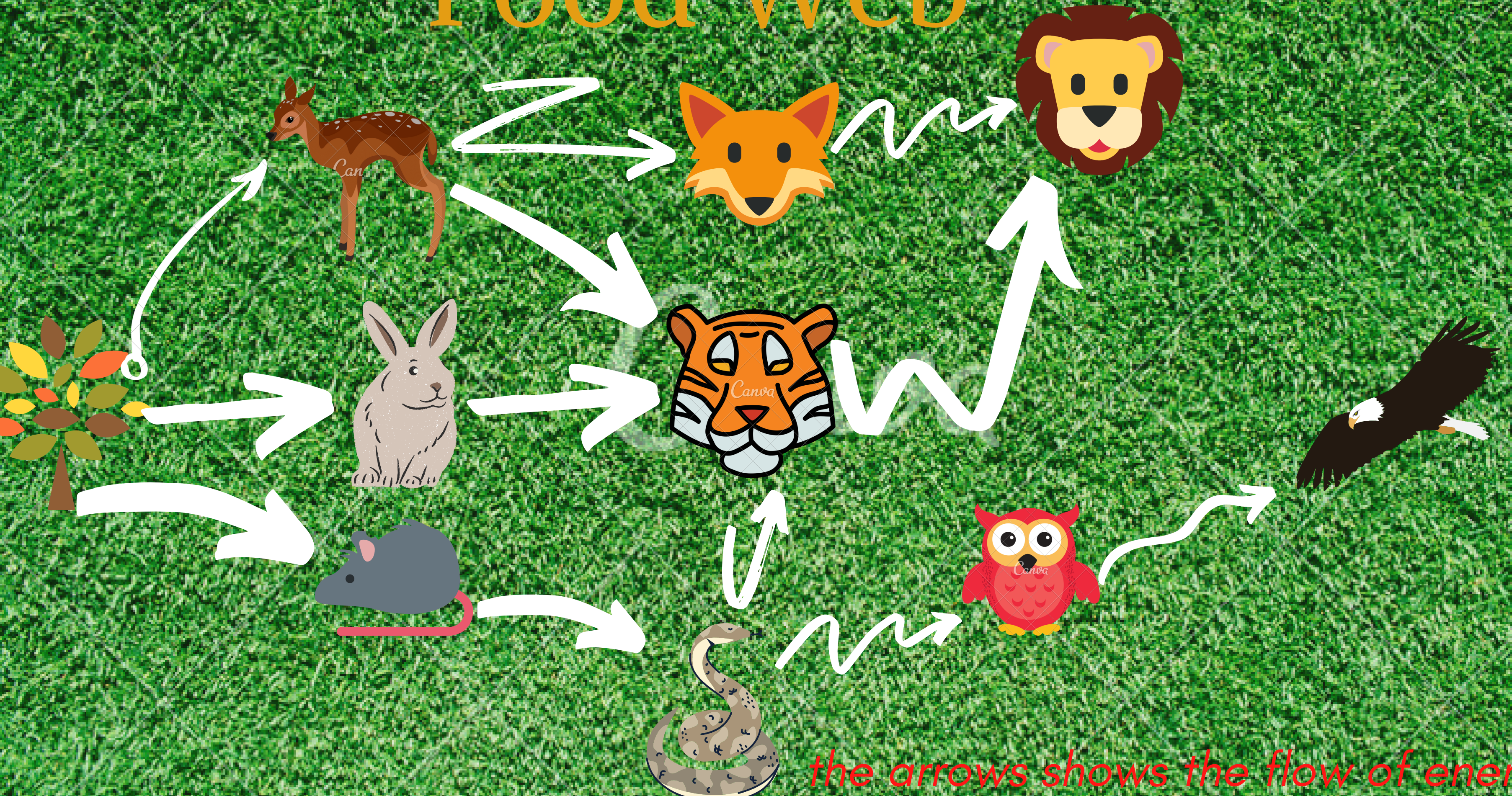
ALL SUSTAINABLE FOOD CHAINS
BEGIN WITH A PRODUCER

PRODUCER OBTAINED ENERGY FROM
THE SUN ALL THE OTHER
CONSUMERS OBTAINED THEIR FOOD
FROM PRODUCERS. THERE IS
UNIDIRECTIONAL FLOW OF ENERGY

FOOD CHAINS ARE GENERALLY
SHORT 3-5



Food Web



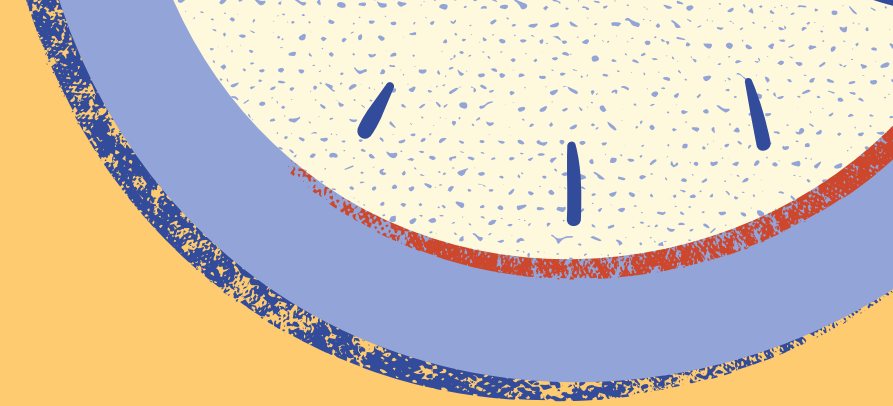
the arrows shows the flow of energy

CLASIFIGING MY FOOD WEB

- RABBIT: PRIMARY**
- MOUSE: PRIMARY**
- DEER: PRIMARY**
- FOX: SECONDARY**
- TIGER: THERTIARY**
- SNAKE: SECONDARY**
- OWL: THERTIARY**
- TREE: PRODUCER**
- LION: QUARTERY**
- EAGLE: QUARTERY**



SAVAGE



*Thank you for
your attention!*

